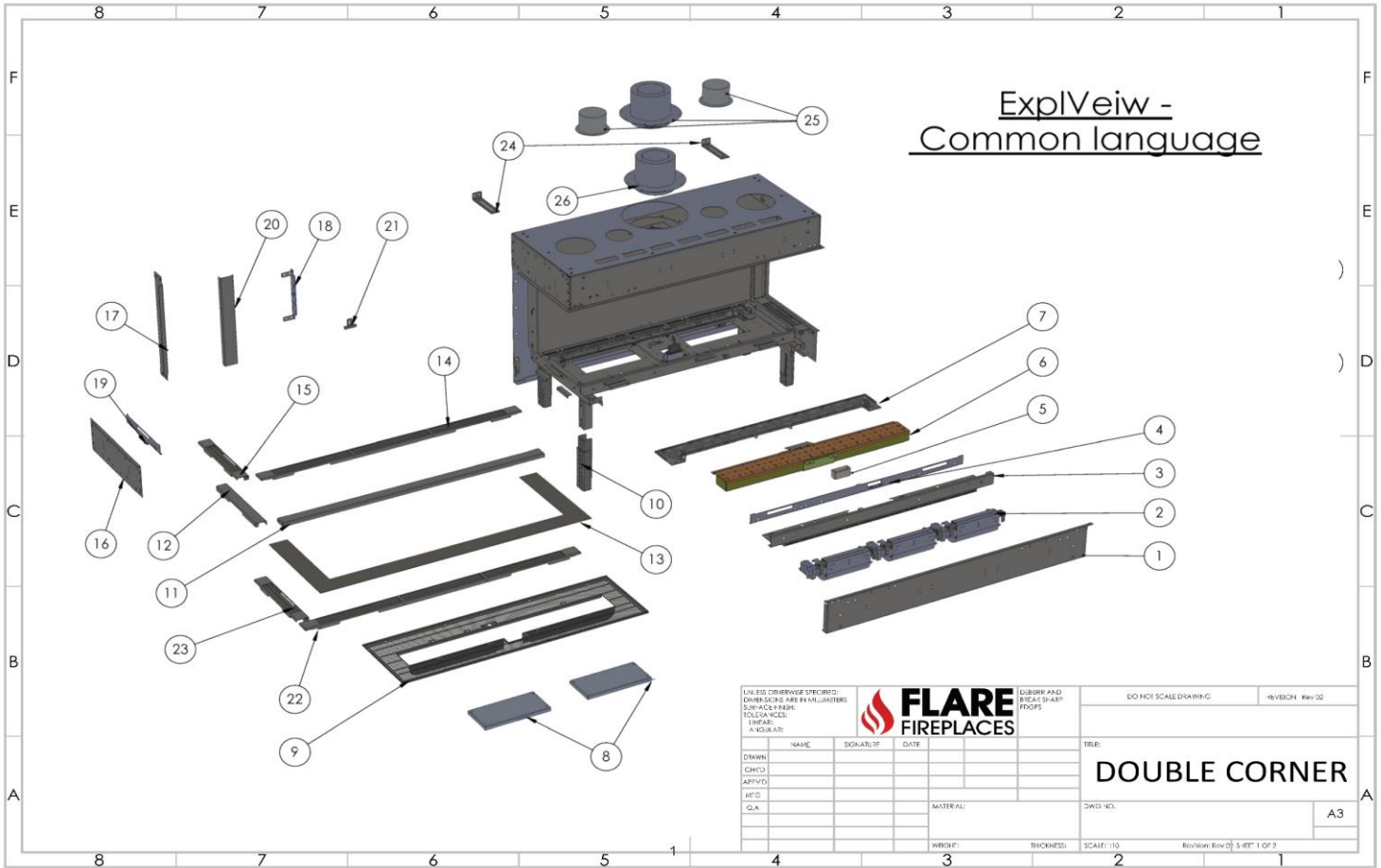


FLARE FIREPLACES | DOUBLE CORNER PARTS VIEW



UNLESS OTHERWISE SPECIFIED: DIMENSIONS ARE IN MILLIMETERS				LUBRIC AND FINISH SHARP POSSY		DO NOT SCALE DRAWING		REVISION: Rev 02	
TOLERANCES: FINISH: ASSEMBLY:						TITLE: DOUBLE CORNER			
DRWN:	NAME:	DATE:							
CHKD:					MATERIAL:				
APP'D:					WORK:	THICKNESS:	SCALE: 1:10	Revision: Rev 02 5 OF 1 OF 2	
MTG:									
QA:									

FLARE FIREPLACES | DOUBLE CORNER PARTS LIST

ITEM #	PART NUMBER	DESCRIPTION	SKU
1		Lower Front Face Frame	CXXX-05-11
2	Fan-Double Glass	8" Double Glass Fan(s)	8DGFAN
3	CXXX-04-11	Service Panel for LED Equipped Units	CXXX-04-11
	CXXX-04-11-W	Service Panel	CXXX-04-11-W
4	RDXXX-01-11	Horizontal Trim Used to Secure Inner Glass to Fireplace Face	RDXXX-01-11
5	G-01-14	Low Profile Pilot Cover	G-01-14
6	BURNER-XX	Burner 14, Burner 21, Burner 31, Burner 40	BURNXX
7	CXXX-07-11	Holder for LED Strips	CXXX-07-11
	CXXX-07-11-W	Holder Without LED Strips	CXXX-07-11-W
8	CXXX-07	Pressure Valve - Down	CXXX-07
	CXXX-08	Pressure Valve - Up	CXXX-08
9	CXXX-06	Burner Tray	TXXX-06
10	G-08+09-11	Telescopic Legs for Corner Fireplaces	G-08-09-11
11	CXXX-10-11-S	Horizontal Filler Used on Screen Equipped Corner Fireplaces.	CXXX-10-11-S
12	C-16-11-SCREEN	Horizontal Side-Filler Used on Screen Equipped Corner Fireplaces.	CX-16-11-S
13		Screen Replacement Trim Filler (DISCONTINUED)	DC-XXX-FILLER-73-(R/H/EH)
14	CXXX-10-11	Horizontal Filler Used on Double Glass Equipped Corner Fireplaces	CXXX-10-11
15	C-16-11	Horizontal Side-Filler Used on Double Glass Equipped Corner Fireplaces	CX-16-11
16	C-04-11	Bottom Left-Side Frame for Double Corner Fireplace	C-04-11
17	C-10-11 OR C-10H-11	Vertical Left-Side Frame for Double Corner Fireplace	CX-10-11
18	G-29	Vertical Left/Right-Side Rail Used to Secure Inner Glass to Fireplace Face	G-29
19	C-14-11	Horizontal Bottom Left-Side Rail Used to Secure Inner Glass to Fireplace Face	TXXX-14-11
20	C-11-11 OR C-11H-11	Vertical Left-Side Magnetic Filler Used Between Inner Glass and Safety Barrier to Provide Finished Look	C-11-11 OR C-11H-11
	C-11-11-N OR C-11H-11-N	Vertical Filler R or H with Screen	C-11-11-N OR C-11H-11-N
21	G-22	Reflective Back Holder	G-22
22	CXXX-10-11-BK	Vertical Front Frame For Double Corner Fireplaces	CXXX-10-11-BK
23	C-16-11-BK	Vertical Front Right-Sided Frame For Double Corner Fireplaces	C-16-11-BK
24	G-02	Fireplace Stabilizer	G-02
25	SKCOVER-XX	Summer Kit Cover	SKCOVER-XX
26	35CVS-AD-FL 46DVA-AD-FL 58DVA-AD-FL	Vent Adapter: 3x5, 4x6, 5x8	35CVS-AD-FL 46DVA-AD-FL 58DVA-AD-FL

X REPRESENTS WHERE YOU'LL NEED TO SPECIFY GLASS HEIGHT, FIREPLACE LENGTH OR STYLE