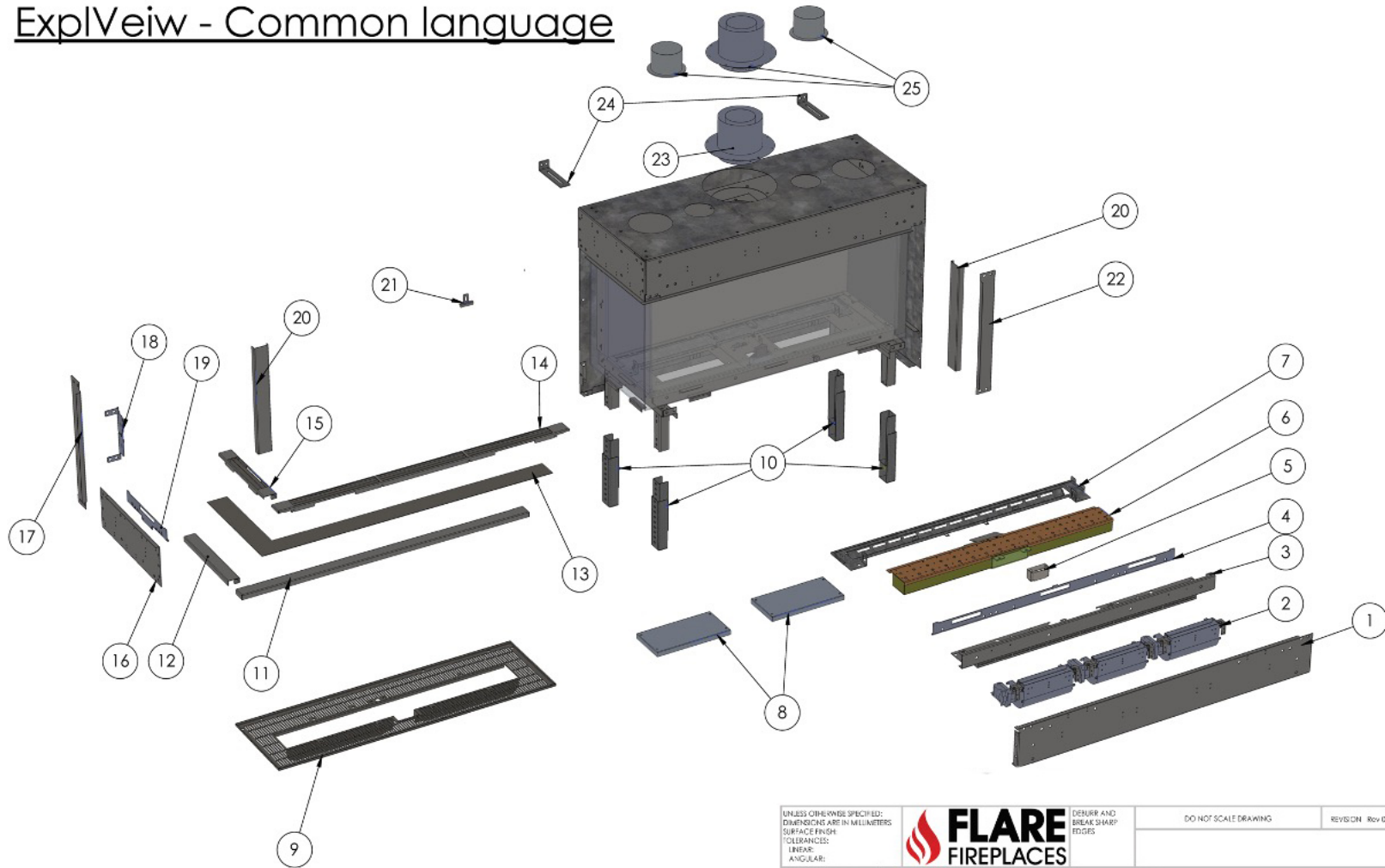


LEFT CORNER PARTS VIEW

ExplView - Common language



| | | | | | | |
|---|------|-----------|--|------------------------------------|---------------------------------------|-----------------------|
| UNLESS OTHERWISE SPECIFIED: DIMENSIONS ARE IN MILLIMETERS SURFACE FINISH: TOLERANCES: LINEAR: ANGULAR: | | | | DEBURR AND BREAK SHARP EDGES | DO NOT SCALE DRAWING | REV/CN: Rev 02 |
| DRAWN | NAME | SIGNATURE | | DATE | TITLE: | Left Corner Fireplace |
| CHK'D | | | | | DWG NO. | A3 |
| APP'VD | | | | | MATERIAL: Material <not specified> | |
| MFG | | | | | WEIGHT: | THICKNESS: |
| Q.A. | | | | | SCALE: 1:10 | Rev 02 SHEET 2 OF 2 |

XXX REPRESENTS FIREPLACE SIZE OR GLASS HEIGHT: 30, 45, 50, 60, 70, 80, 100 | R, H

FLARE FIREPLACES | LC PARTS LIST

| FIREBOX COMPONENTS | | |
|---------------------------|----------------------|--|
| # | PART NUMBER | DESCRIPTION |
| 1 | LC-05-11 | Bottom-Front Frame for Left Corner Fireplace |
| 2 | Double Glass-Fan | Fan used in all Double Glass or Blower Kit equipped units. |
| 3 | LC-11-11 | LED Holder with LED strip |
| | LC-11-11-W | LED Holder without LED strip |
| 4 | RDXXX-01-11 | Butterfly Inner-Glass Gasket Rails (specify top or bottom when ordering) |
| 5 | G-01-14 | Pilot Cover |
| 6 | Burners-XXX | 30", 45", 50", 60", 70", 80", 100" |
| 7 | LCXXX-07-11 | LED Holder with LED strip |
| | LCXXX-07-11-W | LED Holder without LED strip |
| 8 | LCXXX-PRESSURE-UP | Pressure Cap Up for Corner Unit |
| | LCXXX-PRESSURE-DOWN | Pressure Cap Down for Corner Unit |
| 9 | LCXXX-06 | Burner Tray |
| 10 | G-08-09-11 | Telescopic Legs for Corner Fireplaces |
| 11 | FILLER-LCXXX-10-11-S | Screen Trim Filler |
| 12 | FILLER-LCX-16-11-S | Side Screen Trim Filler (X - Specify Glass Height: R, H) |
| 13 | FILLER-LCXXX | Screen Replacement Filler |
| 14 | FILLER-LCXXX-10-11 | Double Glass Trim Filler |
| 15 | FILLER-LCX-16-11 | Side Double Glass Trim Filler (X - Specify Glass Height: R, H) |
| 16 | LC-04-11 | Bottom Left-Side Frame for Left Corner Fireplace |
| 17 | LCX-10-11 | Vertical Left-Side Frame for Left Corner Fireplace (X - Specify Glass Height: R, H) |
| 18 | G-29 | Vertical Rail |
| 19 | LC-14-11 | Bottom Side Rail |
| 20 | LC-11-11X | Vertical Side Trim Filler For Double Glass Left Corner Fireplaces (X - Specify Glass Height: R, H) |
| 21 | G-22 | Reflective Back Holder |
| 22 | LC-30-11X | Vertical Front Right-Side Frame For Left Corner Fireplaces (X - Specify Glass Height: R, H) |
| 23 | Vent Adapter-XXX | XXX Represents: 3x5, 4x6, 5x8 Vent Adapter |
| 24 | G-02 | Fireplace Stabilizer |
| 25 | Summer Kit LCXXX | Summer Kit & 3x5 Vent Adapter |
| 26 | LCXXX-10-11-BK | Filler For Fireplace With Blower Kit |
| | | |
| | | |

FLARE FIREPLACES | LC PARTS LIST

| GV60 SYSTEM | | |
|---|--|--------|
| BRASS FITTINGS | | |
| 4 Way - Cross Fitting | | 1BF4WC |
| Brass Pilot Tube Compression Connector (Valve Side) | | 1BFPCV |
| Brass Spark Plug Connector | | 1BFSPC |
| Brass Thermocouple Connector (Pilot Side) | | 1BFTCP |
| Brass Thermocouple Connector (Valve Side) | | 1BFTCC |
| Brass Thermocouple Housing-Block | | 10BFTH |
| PILOT ASSEMBLY | | |
| Pilot Assembly NG | | 100CPA |
| Pilot Housing | | 1000PH |
| Pilot Housing Cover | | 100PHC |
| Pilot Housing Green Gasket | | 100PHG |
| Pilot Tube | | 100PPT |
| Spark Cable | | 100PSC |
| Spark Plug (Electrode) | | 100PSP |
| Thermocouple | | 100PTH |
| VALVE SYSTEM | | |
| 1/2" Brass Inlet Fitting for GV60 Gas Valve | | 1GV12I |
| 3/8" GV60 Gas Valve Inlet Fitting | | 1GV38I |
| 8 Pin Data Cable | | 1GV8DC |
| GV60-Receiver (Green) - B6R-R9U | | 1GVRCG |
| GV60 Complete Gas System | | 1GVCGS |
| GV60 Power Adapter | | 10GVPA |
| 2way-receiver-GV60 - B6R-R9P | | 1GVRCB |
| 2way-remote-GV60 - B6R-H9T5PB | | 10GVRM |
| GV60 Gas Valve | | 10GVGV |
| GV60 WiFi Controller | | 1GVWSC |
| Home Automation Cable | | 1GVHAC |
| Thermocouple Red Cable | | 1GVTRC |
| Thermocouple Yellow Cable | | 1GVTYC |
| Wall Switch | | 10GVWS |
| WiFi Cable | | 1GVWFC |

FLARE FIREPLACES | LC PARTS LIST

| SIT SYSTEM | |
|--|-----------------|
| SIT-Full Gas System | SITFGS |
| SIT-Valve NG | SITNGV |
| SIT-Valve LP | SITLPV |
| SIT-Remote | SITREM |
| SIT-Receiver | SITREC |
| SIT-Wall Switch X-8-DG | SITWX8DG |
| SIT-Wall Switch X-8-S | SITWX8S |
| SIT-Data X-5 Cable | SITDX5 |
| SIT- Ground cable | SITGRC |
| SIT- Control Board | SITDCB |
| SIT-110 X-1 Cable With Molex | SIT10M |
| SIT- 110 X-1 Cable | SIT110 |
| SIT-Relay X-4 Cable | SITRX4 |
| SIT-Pilot Assembly NG / LP | SITPAN / SITPAL |
| SIT-Spark Cable | SITSPC |
| SIT-NG Motor | SITNGM |
| SIT-LP Motor | SITLGM |
| SIR-Jumper x-4 | SITJUM |
| SIT-DG Relay Kit | SITDGR |
| SIT Pilot Brass Compression Fitting | SITPCF |
| HONEYWELL SYSTEM | |
| Honeywell Spark Cable | 1HWSPS |
| 36" Honeywell Spark Cable | 1HWSCL |
| Brass Honeywell Pilot Connector | 1HWPBC |
| Honeywell Data Cable | 100HWF |
| Honeywell Pilot Assembly | 10HWP |
| Honeywell Premium Remote (On/Off remote) | 10HWPR |
| Honeywell Transformer | 100HWT |
| Honeywell Valve | 100HWV |
| Honeywell Control Board | 10HWCB |
| Control Module (Honeywell Pilot Interrupter) | 100HWR |
| Digital / Analog Wall Timer | 1HWPWT / 10HWWT |

FLARE FIREPLACES | LC PARTS LIST

| BURNERS | |
|-------------------------------------|---------|
| Burner 13 3/4" (35) | 100B35 |
| Burner 21 5/8" (55) | 100B55 |
| Burner 31 1/2" (80) | 100B80 |
| Burner 41 5/16" (105) | 10B105 |
| Gas Flex Line-Long | 10GFLL |
| Gas Flex Line-Medium | 10GFML |
| Gas Flex Line- Short | 10GFSL |
| ORIFICES | |
| 120 Orifice | 1BO120 |
| 160 Orifice | 1BO160 |
| 180 Orifice | 1BO180 |
| 220 Orifice | 1BO220 |
| 260 Orifice | 1BO260 |
| 320 Orifice | 1BO320 |
| 380 Orifice | 1BO380 |
| 480 Orifice | 1BO480 |
| 500 Orifice | 1BO500 |
| 550 Orifice | 1BO550 |
| 650 Orifice | 1BO650 |
| 800 Orifice | 1BO800 |
| 1000 Orifice | 1BO1000 |
| 1200 Orifice | 1BO1200 |
| 1400 Orifice | 1BO1400 |
| Pilot LP | 1PORLP |
| Honeywell Pilot LP | 1POCLP |
| Pilot NG | 1PORNG |
| DOUBLE GLASS SYSTEM | |
| 6v Cable | 1DG6VC |
| 8' Double Glass Fan Extension Cable | 1DGFEC |
| 8" Double Glass Exhaust Blower Fan | 10DGEF |
| Double Glass Control Board | 10DGCB |
| Fan Cable (Closed) | 1DGFCC |

FLARE FIREPLACES | LC PARTS LIST

| DOUBLE GLASS SYSTEM | |
|---|--------|
| Fan Cable (Open) | 1DGFCO |
| Blue Relay Cable | 1DGRCB |
| Green Relay Cable | 1DGRCG |
| Solenoid | 100DGS |
| Solenoid 10" Flex Pipe | 1DGSFP |
| LED SYSTEM | |
| LED Controller | 10LEDC |
| LED Remote | 10LEDR |
| LED RGB Control Set | 1LEDCS |
| RGB LED Strip | 1LEDLS |
| LED Y Cable Harness | 1LEDYC |
| LED Power Supply | 1LEDPS |
| MISC. | |
| Fan Cable Plastic Connector (Male) | 100PCM |
| Fan Cable Plastic Connector Metal Pins (Female) | 100MPF |
| Fan Cable Plastic Connector Metal Pins (Male) | 100MPM |
| Plastic Thermocouple Piece | 100PTP |
| Reflective Back Holder | 10MRBH |
| Side Reflective Back Holders | 1MSRBH |
| Side Trim Piece | 10MSTP |
| Telescopic Legs | 10MTSL |
| Telescopic Leg Feet | 1MTSLF |

FLARE FIREPLACES | LC PARTS LIST

| FLARE LEFT CORNER 16" REGULAR GLASS | | | | | | |
|--|----------------------------|---------------|---------------------------|---------------|-----------------------------|---------------|
| FIREPLACE | TEMPERED GLASS (in) | | CERAMIC GLASS (in) | | REFLECTIVE BACK (in) | |
| | <i>LENGTH</i> | <i>HEIGHT</i> | <i>LENGTH</i> | <i>HEIGHT</i> | <i>LENGTH</i> | <i>HEIGHT</i> |
| LC-100 | 96 5/8" | 16 5/8" | 94 11/16" | 16 5/8" | 93 11/16" | 14" |
| LC--80 | 79 3/4" | 16 5/8" | 77 3/4" | 16 5/8" | 76 15/16" | 14" |
| LC--70 | 67 3/16" | 16 5/8" | 65 3/16" | 16 5/8" | 64 | 14" |
| LC--60 | 57 5/16" | 16 5/8" | 55 5/16" | 16 5/8" | 54 5/16" | 14" |
| LC--50 | 47 1/2" | 16 5/8" | 45 1/2" | 16 5/8" | 44 8/26" | 14" |
| LC--45 | 40 13/16" | 16 5/8" | 38 3/4" | 16 5/8" | 37 10/16" | 14" |
| SIDES-LC-R | 14 7/16" | 16 5/8" | 12 5/8" | 16 5/8" | 11 7/16" | 14" |

| FLARE LEFT CORNER 24" HIGH GLASS | | | | | | |
|---|----------------------------|---------------|---------------------------|---------------|-----------------------------|---------------|
| FIREPLACE | TEMPERED GLASS (in) | | CERAMIC GLASS (in) | | REFLECTIVE BACK (in) | |
| | <i>LENGTH</i> | <i>HEIGHT</i> | <i>LENGTH</i> | <i>HEIGHT</i> | <i>LENGTH</i> | <i>HEIGHT</i> |
| LC--100-H | 96 5/8" | 24 1/2" | 94 11/16" | 24 1/2" | 93 11/16" | 21 5/8" |
| LC--80-H | 79 3/4" | 24 1/2" | 77 3/4" | 24 1/2" | 76 15/16" | 21 5/8" |
| LC--70-H | 67 3/16" | 24 1/2" | 65 3/16" | 24 1/2" | 64 | 21 5/8" |
| LC--60-H | 57 5/16" | 24 1/2" | 55 5/16" | 24 1/2" | 54 5/16" | 21 5/8" |
| LC--50-H | 47 1/2" | 24 1/2" | 45 1/2" | 24 1/2" | 44 8/26" | 21 5/8" |
| LC--45-H | 40 13/16" | 24 1/2" | 38 3/4" | 24 1/2" | 37 10/16" | 21 5/8" |
| LC--30-H | 27 13/16" | 24 1/2" | 25 11/16" | 24 1/2" | 24 5/8" | 21 5/8" |
| SIDES-LC-H | 14 7/16" | 24 1/2" | 12 5/8" | 24 1/2" | 11 7/16" | 21 5/8" |

FLARE FIREPLACES | LC PARTS LIST

| INVISIBLE MESH SAFETY SCREENS | | |
|-------------------------------|-------------|---------|
| Safety Screen LC--100-H | SS-LC-100-H | SCLC10H |
| Safety Screen LC--100 | SS-LC-100 | SCLC10R |
| Safety Screen LC--80-H | SS-LC-80-H | SCLC80H |
| Safety Screen LC--80 | SS-LC-80 | SCLC80R |
| Safety Screen LC--70-H | SS-LC-70-H | SCLC70H |
| Safety Screen LC--70 | SS-LC-70 | SCLC70R |
| Safety Screen LC--60-H | SS-LC-60-H | SCLC60H |
| Safety Screen LC--60 | SS-LC-60 | SCLC60R |
| Safety Screen LC--50-H | SS-LC-50-H | SCLC50H |
| Safety Screen LC--50 | SS-LC-50 | SCLC50R |
| Safety Screen LC--45-H | SS-LC-45-H | SCLC45H |
| Safety Screen LC--45 | SS-LC-45 | SCLC45R |
| Safety Screen LC--30 | SS-LC-30 | SCLC30H |

FLARE FIREPLACES | LC PARTS LIST

| HORIZONTAL POWER VENT PARTS | | | |
|-------------------------------|-------------|--------|-------------------|
| PV Heat Resistant Fan | | 1PVHRF | |
| PV Internal Electronics Board | | 1PVIEB | |
| Drift Switch | | 1PVIDS | |
| Drift Switch Tube | | 1PVDST | |
| 3 Wire PV Data cable | | 1PVCBS | |
| Solenoid | | 100DGS | DOUBLE GLASS ONLY |
| DG/PV Control Board | | 1PVCSB | DOUBLE GLASS ONLY |
| 3x5 Adaptor Male | 35CVS-ADM-F | 1PV35M | |
| 3x5 Adaptor Female | 35CVS-ADF-F | 1PV35F | |
| 3X5 Reducer Kit | | 1PVARK | |
| VERTICAL POWER VENT PARTS | | | |
| PV Heat Resistant Fan | | 1PVHRF | |
| PV Internal Electronics Board | | 1PVIEB | |
| Drift Switch | | 1PVIDS | |
| Drift Switch Tube | | 1PVDST | |
| 3 Wire PV Data cable | | 1PVCBS | |
| Solenoid | | 100DGS | DOUBLE GLASS ONLY |
| DG/PV Control Board | | 1PVCSB | DOUBLE GLASS ONLY |
| 3x5 Adaptor Male | 35CVS-ADM-F | 1PV35M | |
| 3x5 Adaptor Female | 35CVS-ADF-F | 1PV35F | |
| 3X5 Reducer Kit | | 1PVARK | |
| INLINE POWER VENT PARTS | | | |
| PV Heat Resistant Fan | | 1PVHRF | |
| PV Internal Electronics Board | | 1PVIEB | |
| Drift Switch | | 1PVIDS | |
| Drift Switch Tube | | 1PVDST | |
| 3 Wire PV Data cable | | 1PVCBS | BOARD SIDE |
| Solenoid | | 100DGS | DOUBLE GLASS ONLY |
| DG/PV Control Board | | 1PVCSB | DOUBLE GLASS ONLY |
| 3x5 Adaptor Male | 35CVS-ADM-F | 1PV35M | |
| 3x5 Adaptor Female | 35CVS-ADF-F | 1PV35F | |
| 3X5 Reducer Kit | | 1PVARK | |

FLARE FIREPLACES | LC PARTS LIST

| SUMMER KIT PARTS | | | |
|-----------------------------------|---------------|---------|----------------|
| SK Heat Resistant Fan | | 1SKHRF | |
| SK Internal Electronics Board | | 1SKIEB | |
| 4" Male Adaptor | | 1SK4MA | |
| 6" Male Adaptor | | 1SK6MA | |
| Summer Kit Cable SK Side | | 1SKIBC | |
| Summer Kit Cable Board Side | | 1SKDGC | |
| Summer Kit Relay Cable Kit (Blue) | | 1SKRKB | |
| Summer Kit Relay Cable (Green) | | 1SKRKG | |
| Summer Kit Cover | FLARE-SKC-30 | 1SKC30 | 30" Fireplace |
| | FLARE-SKC-45 | 1SKC45 | 45" Fireplace |
| | FLARE-SKC-50 | 1SKC50 | 50" Fireplace |
| | FLARE-SKC-60 | 1SKC60 | 60" Fireplace |
| | FLARE-SKC-70 | 1SKC70 | 70" Fireplace |
| | FLARE-SKC-80 | 1SKC80 | 80" Fireplace |
| | FLARE-SKC-100 | 1SKC100 | 100" Fireplace |
| Self Tapping Screws | | 10MSTS | |