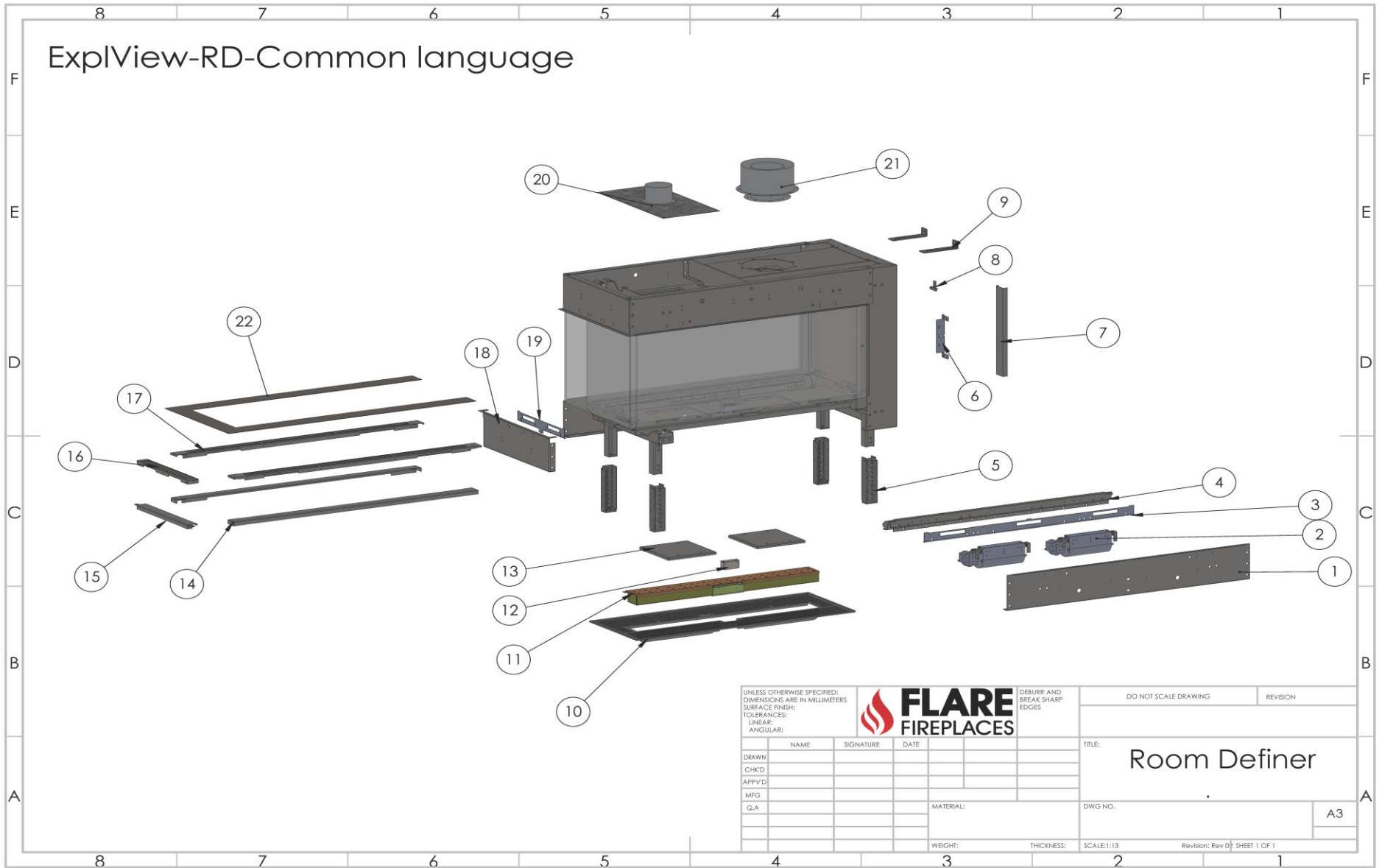


FLARE FIREPLACES | ROOM DEFINER PARTS VIEW



FLARE FIREPLACES | ROOM DEFINER PARTS LIST

ITEM #	PART NUMBER	DESCRIPTION	SKU
1	RDXXX-06-11	Bottom-Left/Right Frame for Room Definer Fireplace	RDXXX-06-11
2	Fan-Double Glass	8" Double Glass Fan(s)	8DGFAN
3	CXXX-04-11	Service Panel for LED Equipped Units	CXXX-04-11
	CXXX-04-11-W	Service Panel	CXXX-04-11-W
4	CXXX-07-11	Holder for LED Strips	CXXX-07-11
	CXXX-07-11-W	Holder Without LED Strips	CXXX-07-11-W
5	G-08+09-11	Telescopic Legs for Corner Fireplaces	G-08-09-11
6	G-29	Vertical Left/Right-Side Rail Used to Secure Inner Glass to Fireplace Face	G-29
7	C-11-11 OR C-11H-11	Vertical Left-Side Magnetic Filler Used Between Inner Glass and Safety Barrier to Provide Finished Look	C-11-11 OR C-11H-11
	C-11-11-N OR C-11H-11-N	Vertical Filler R or H with Screen	C-11-11-N OR C-11H-11-N
8	G-22	Reflective Back Holder	G-22
9	G-02	Fireplace Stabalizer	G-02
10	CXXX-06	Burner Tray	CXXX-06
11	BURNER-XX	Burner 14, Burner 21, Burner 31, Burner 40	BURNXX
12	G-01-14	Low Profile Pilot Cover	G-01-14
13	CXXX-07	Pressure Valve - Down	CXXX-07
	CXXX-08	Pressure Valve - Up	CXXX-08
14	CXXX-10-11-S	Horizontal Filler Used on Screen Equipped Room Definer Fireplaces.	CXXX-10-11-S
15	RD-02-11-N	Side Filler for RD Fireplace with Screen	RD-02-11-N
16	RD-02-11	Side Filler for RD Fireplace with Double Glass	RD-02-11
17	CXXX-10-11	Horizontal Filler Used on Double Glass Equipped Corner Fireplaces.	CXXX-10-11
	CXXX-10-11-BK	Horizontal Filler Used on Blower Kit Equipped Corner Fireplaces.	CXXX-10-11-BK
18	RD-04-11	Side-Frame for Room Definer Fireplace	RD-04-11
19	RD-03-11	Side Rail - RD	RD-03-11
20	SKCOVER-XX	Summer Kit Cover	SKCOVER-XX
21	35CVS-AD-FL 46DVA-AD-FL 58DVA-AD-FL	Vent Adapter: 3x5, 4x6, 5x8	35CVS-AD-FL 46DVA-AD-FL 58DVA-AD-FL
22	RDXXX-Filler 73 - R/H/ EH	Replacement Filler - In case of screen removal - Vertical + Horizontal filler - Only in case screen is removed (DISCONTINUED)	

X REPRESENTS WHERE YOU'LL NEED TO SPECIFY GLASS HEIGHT, FIREPLACE LENGTH OR STYLE