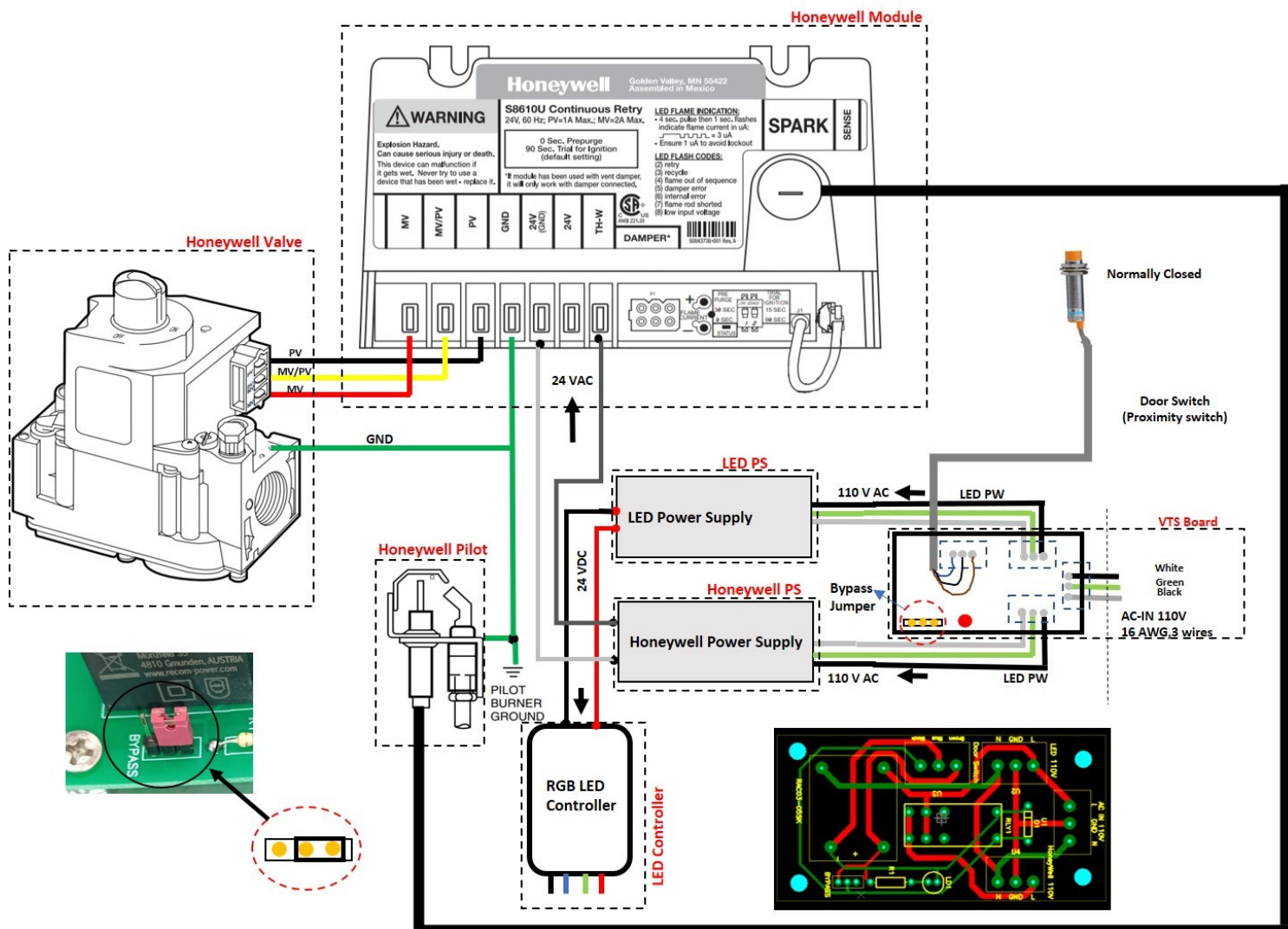
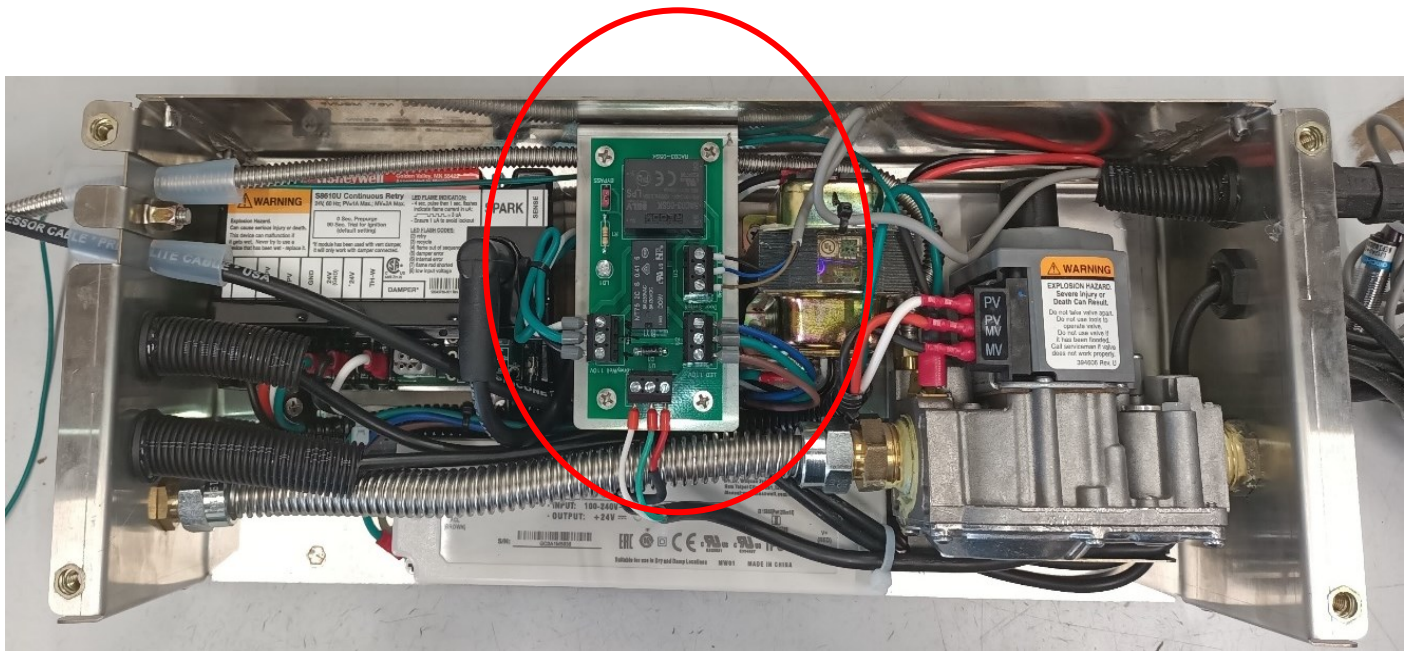


ELECTRICAL DRAWING FOR INSIDE VENTLESS CORE

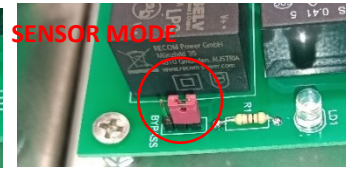
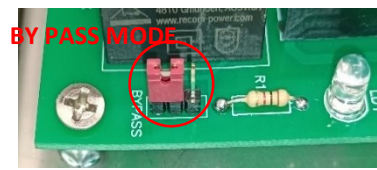
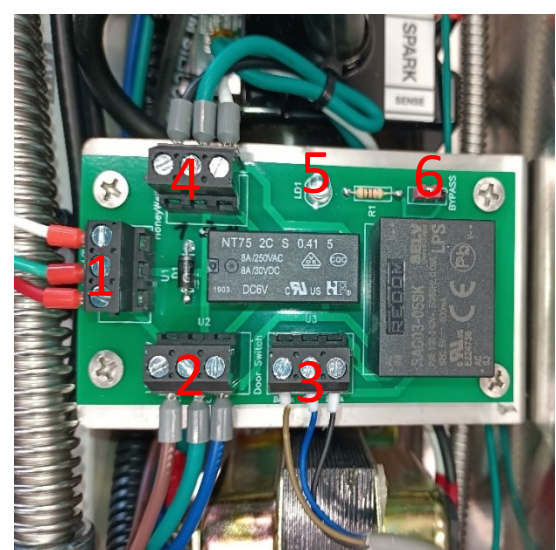


VENTLESS POWER BOARD

Ventless Fireplaces have a small electronic Board installed inside the ventless box it used to manage and control the Electric Draw from the Source power to the Honeywell Valve using the Proximity Sensor.



1. **POWER SOURCE:** ELECTRICAL POWER SOURCE 110V AC.
2. **LED POWER:** LED POWER SUPPLY 110V
3. **DOOR SWITCH:** PROXIMITY SENSOR PORT, SENSOR WILL BE CONNECTED HERE ACCORDING TO THE LABELED COLORS.
4. **HONEYWELL POWER:** HONEYWELL POWER 110V PORT CONTROLLER BY THE PROXIMITY SENSOR STATUS.
5. **LED LD1:** LED POWER INDICATOR (RED LIGHT).
6. **BYPASS JUMPER:** THIS JUMPER WILL BE USED TO BYPASS THE DOOR SWITCH IN CASE OF HAVING AN ISSUE IN THE DOOR SWITCHES.



NOTE: MOVING THIS JUMPER TO THE **BYPASS MODE** WILL ALLOWS THE FIREPLACE TO RUN EVEN THE DOOR IS EXISTING. BE CAREFUL WHEN CHANGE TO **BYPASS MODE**